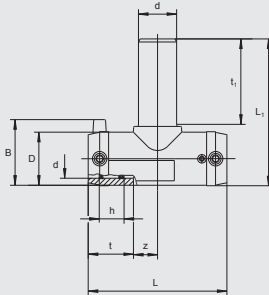


TA

## T-Pieces with extra long outlet spigot



Straight connector with exposed heating coils for optimal heat transfer, large insertion depth, wide fusion zones plus cold zones at the end and in the middle to prevent the flow of molten material, for use without holding devices. Up to and including d63 extra long outlet spigot dimensioned for 2 fusion operations.

PE 100 SDR 11

Maximum working pressure 16 bar (water)/10 bar (gas)



d	Order Ref.	Stock-status	BX	PU	D	L	L <sub>1</sub>	Weight kg/each
20/20	<b>616685</b> ①	3	200	3200	29	77	95	0.040
25/25	<b>616338</b>	1	50	900	36	108	110	0.080
32/32	<b>615719</b>	1	35	630	44	116	131	0.120
40/40	<b>615720</b>	1	20	360	53	146	151	0.210
50/50	<b>615721</b>	1	10	180	67	175	186	0.360
63/63	<b>615722</b>	1	10	180	81	197	203	0.530

① Design deviates from product description