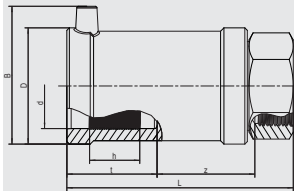


# USTM

## Transition Fittings HD-PE/Steel with female thread



Compact transition fitting. HD-PE end with exposed heating coils for optimal heat transfer, large insertion depth, wide fusion zone plus cold zones at the end and in the transition area to prevent the flow of molten material for use without holding devices. Steel end permanently anchored in the HD-PE. Self sealing patented sealing geometry without elastomer seal. For use in gas systems.

Other thread sizes on request

### PE 100 SDR 11

### Maximum working pressure 5 bar (gas)



d	Rp	Order Ref.	Stock-status	BX	PU	D	L	Weight kg/each
32	1''	<b>612570</b>	1	20	1080	47	112	0.340
40	1 1/4''	<b>612572</b>	1	20	800	58	121	0.500
50	1 1/2''	<b>612574</b>	1	15	600	70	136	0.650
63	2''	<b>612576</b>	1	10	400	84	141	1.010