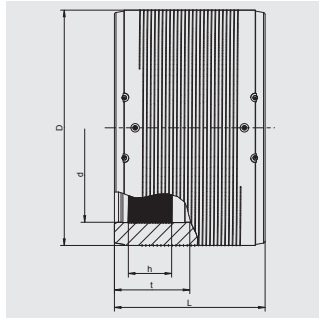


UB SDR 11

Slide-over Couplers, SDR 11



With exposed heating coils for optimal heat transfer, large insertion depth, wide fusion zones plus cold zones at the end and in the middle to prevent the flow of molten material, for use without holding devices. With separate fusion zone and one indicator per fusion zone for visual fusion control.

With pre-heating technology (d 400 – d 450 optional use; d 500 – d 900 required).

Special sizes, pressure stages and designs on request

PE 100 SDR 11

Maximum working pressure 16 bar (water)/10 bar (gas)



d	Order Ref.	Stock-status	BX	PU	D	L	Weight kg/each
16	616577	1	135	4.320	29	60	0.030
32	612662	1	60	1.920	45	77	0.064
40	612663	1	40	1.280	54	86	0.096
50	612664	1	25	800	68	98	0.151
63	612665	1	15	480	82	112	0.225
75	612666	1	50	400	98	122	0.360
90	612667	1	30	240	114	157	0.510
110	612668	1	24	192	137	159	0.705
125	612669	1	16	128	156	172	0.946
140	615001	1	12	96	174	184	1.270
160	612671	1	8	64	199	190	1.772
180	612672	1	6	48	220	210	2.088
200	612673	1	1	56	247	220	2.798
225	612674	1	1	36	277	236	3.950
250	612675	1	1	24	315	246	5.800
280	615073	1	1	18	347	285	7.740
315	612670	1	1	18	390	300	10.040
355	615074	1	1	9	445	300	14.600
400	615075①	1	1	4	500	320	20.800
450	615076①	1	1	4	560	340	30.000
500	615124①	1	1	2	630	360	40.000
560	616312①	1	1	2	715	380	55.000
630	616269①	1	1	2	810	420	79.600
710	616313①	1	1	1	900	442	101.000
800	616314①	1	1	1	1000	500	138.800

① separate fusion zones