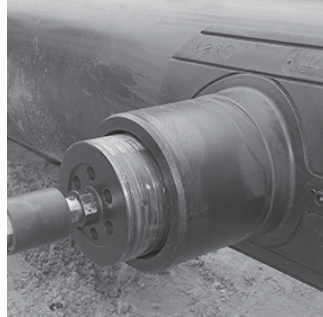


For integration of a branch line in PE pipelines –unpressurised or under operating pressure. Compact fitting made of HD-PE. Saddle with exposed heating element for optimal heat transfer. Outlet spigot for processing with FRIALEN couplers MB or UB. Suitable for all pipe diameters in the given range. Assembly with FRIATOOLS clamping unit UNITOP (see Product Range FRIATOOLS). Tapping in unpressurised condition with FRIATOOLS tapping kit FWAB XL (see Product Range FRIATOOLS). Pressure test of saddles fusion is possible before tapping via integrated pressure nozzle and pressure test adaptor FWDPA (see Product Range FRIATOOLS).

For tapping under pressure, please contact our hotline: +49 621 486 2325.



PE 100 SDR 11

Maximum working pressure 16 bar (water)/10 bar (gas)



d_1	d_2	Order Ref.	Stock-status	BX	PU	Drilling $\varnothing d_a$	L	Weight kg/each
250-280	90	616553	1	5	40	66	130	1.465
250-280	110	616554	1	5	40	82	140	1.610
250-280	125	616555	1	5	40	94	146	1.790
250-280	160	616556	1	5	40	123	158	2.180
315-400	90	616557	1	5	40	66	130	1.485
315-400	110	616558	1	5	40	82	140	1.630
315-400	125	616559	1	5	40	94	146	1.810
315-400	160	616560	1	5	40	123	158	2.190
450-900	90	616561	1	5	40	66	130	1.500
450-900	110	616562	1	5	40	82	140	1.645
450-900	125	616563	1	5	40	94	146	1.820
450-900	160	616564	1	5	40	123	158	2.200

Also suitable for all special dimensions in relining application. For intermediate sizes in the diameter range $d 280 - < d 315$, please use SA UNI d 250 - 280.