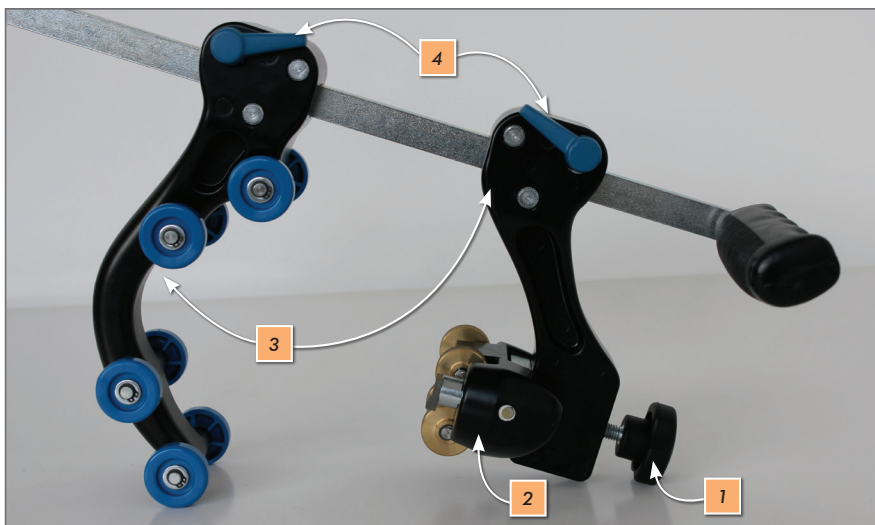
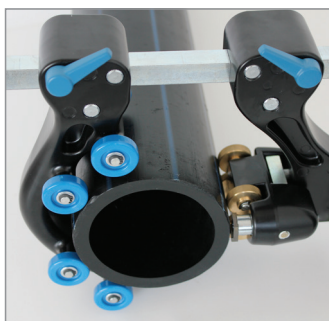




**egepeel 200**



Pic, 1



Pic, 2



Pic, 3



Pic, 4

## TECHNICAL FEATURES

### MOUNTING INSTRUCTION

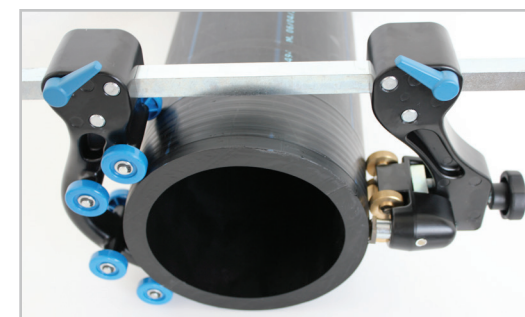
- a) The wheel (1) must not be too tight in order to avoid the holder push the head (2). Open the left jaw (3) by turning downside the locking lever (4) and then lock it on the pipe; in case of head scraping fix the beginning of the blade on the edge of the pipe (Pic.2).
- b) Tighten the jaw as for pic.3 up to press the blade on the pipe and then leave the lever
- c) screw the wheel (1) up to fix the scraper

### SCRAPING

- d) Holding the handle (5) turn the scraper clockwise until the desired length of scraping you need and if needed press axially on the handle to increase or decrease the progress of the scraper..

### REMOVAL

- e) Unscrew the wheel (1)
- f) Keep the jaws (3) as for pic.3, unlock the lever leg by pressing and release the tool from the pipe by pressing with the palm of the hand on the jaw with blade



Product code	<b>EGEPEEL200</b>
Range	63-200 mm - 2,48-7,874 in
Scraping area	Socket and saddle
Scraping depth	0.2 mm - 0,01 in.
Blade width	10 mm - 0,394 in.
Scraping Length	- no limits
Weight	2.8 Kg - 6,17 lb
Working dimension	342x223x160 mm - 13,47x8,78x6,30 in.